



NCCPA **Communications**

Amplifying the PA Profession &
Providing Resources to PA Program Educators

Cynthia Griffith, MPAS, PA-C
PA Outreach Specialist



Communications Goals



A CAREER-LONG PARTNER

Position NCCPA as a partner to PAs throughout their careers



PAS ARE ESSENTIAL

Demonstrate the essential role of PAs in patient care, and as a part of the health care team



CERTIFICATION MATTERS

Create positive sentiment about why certification and re-certification are needed



Communications Goals

Using a multi-pronged approach, the NCCPA Communications team elevates the PA profession in the public consciousness, helping patients feel confident when seeing a Board Certified PA, and instilling further pride in those who choose to be part of the profession.



PANCE at a Glance

-
- Overview of PANCE, NOT a prep course
 - Goal is information about PANCE for smooth registration, performance planning and test anxiety/stress mitigation
 - Offered by NCCPA as a complimentary student outreach service to PA Programs
 - Presentation is about 60 minutes



2025 UNIVERSITY PRESENTATIONS



Test preparation strategies

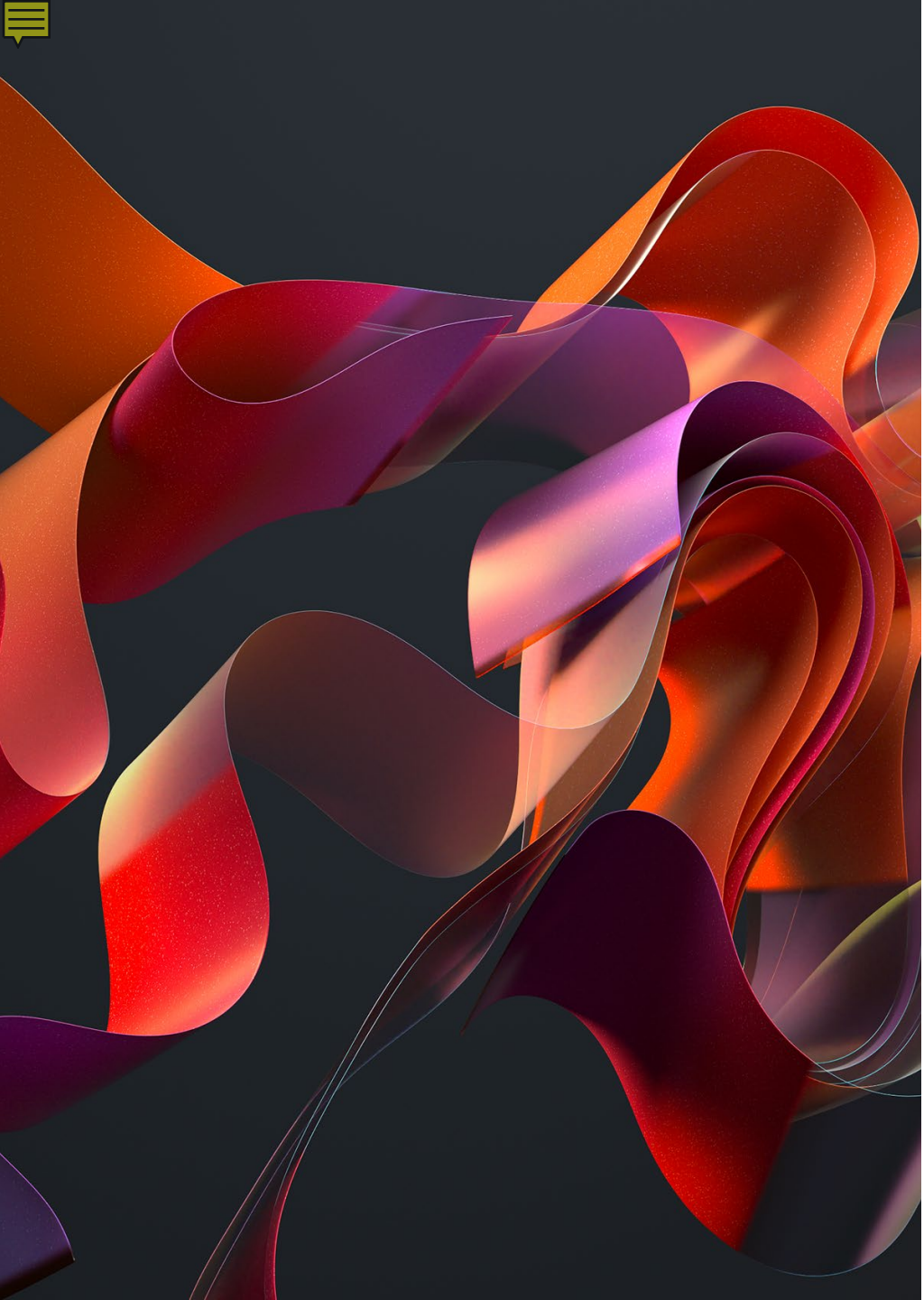
What's On the Exam

Content blueprint and how to read it

"How do I prepare for PANCE?"

NCCPA Practice Exams, understanding feedback form

NCCPA.net resources: Lab Values, FAQ



PANCE Day Logistics

- Check-in process @ Pearson VUE
- Types of ID allowed by NCCPA policy
- Exam day preparation tips
- Items allowed and NOT allowed in exam room
- Scheduled vs. Unscheduled breaks



Next steps after PANCE

- Filing a grievance *if* something beyond your students' control interfered with performing their best at the Pearson VUE center
- Accessing results
- NCCPA policies if retest is needed
- Credentialing info release to employer and any other necessary entities

- Brief look at
 - CME requirements
 - CME logging
 - PANRE/PANRE-LA every 10 years
- NCCPA resources for today and throughout their career



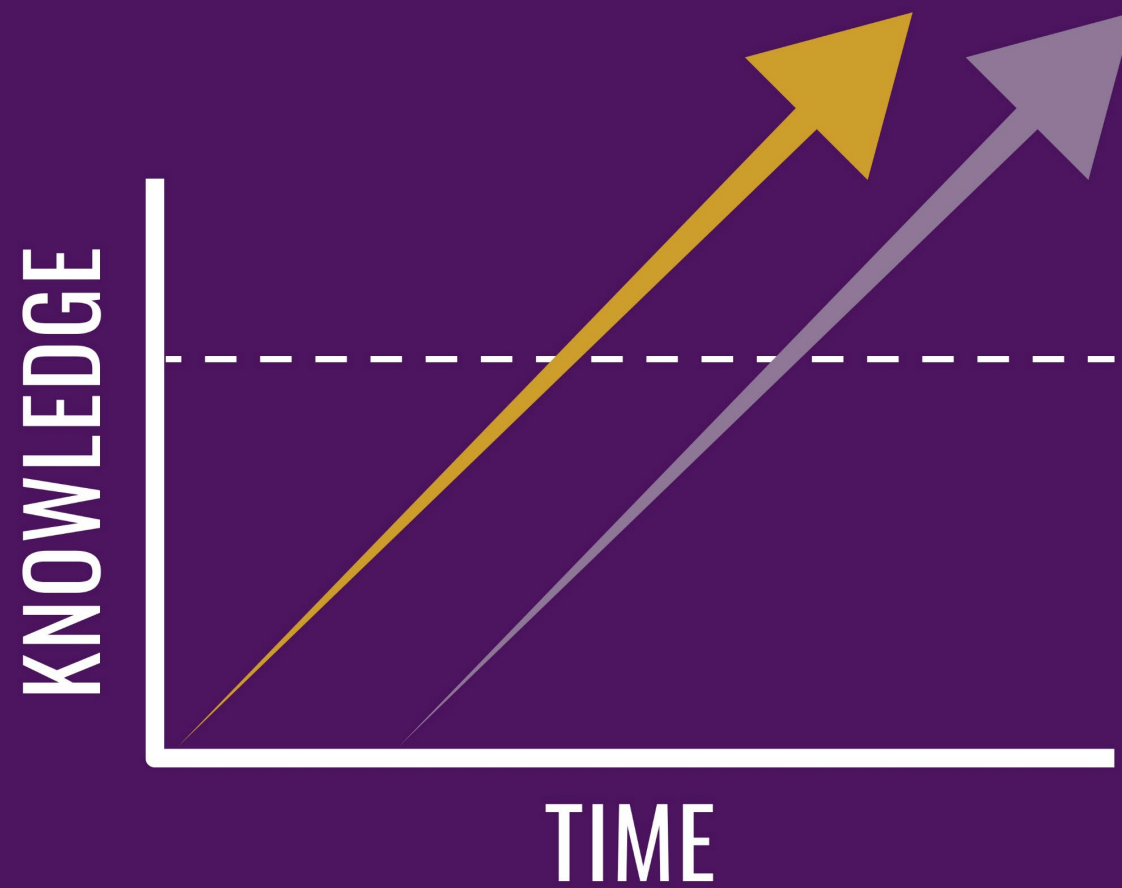
Common Questions –Accommodations

- Students must request accommodations during the exam application
 - Required documentation from a medical professional
 - Diagnosis, functional impact, test results, recommended accommodation
 - Specifics at <https://www.nccpa.net/become-certified/testing-accommodations/>
- Prior PA program accommodations does not equal automatic approval
- Exam cannot be scheduled until accommodations are approved
- If a student needs accommodations after a test date has been scheduled this will require a new test date



Most Common Accommodations

- Extended time (1.5x or 2x; may require 2 testing days)
- Reader, enlarged font, adjustable contrast
- Additional or extended breaks (up to 75 mins/day)
- Separate testing room
- Medical Device (with approval)



Scheduling a Presentation

Best time for students seems to be either when they first sign up for PANCE (6 months before graduation all the way up to about 3 months before graduating) OR between didactic and clinical rotations.

Virtual, in person or prerecorded

All expenses are covered by NCCPA, this is a complimentary student outreach resource provided by NCCPA. Just as are NCCPA speakers to State and Specialty PA conferences and events.





calendly.com/cynthiag-nccpa/pance

SCAN TO SCHEDULE A PRESENTATION

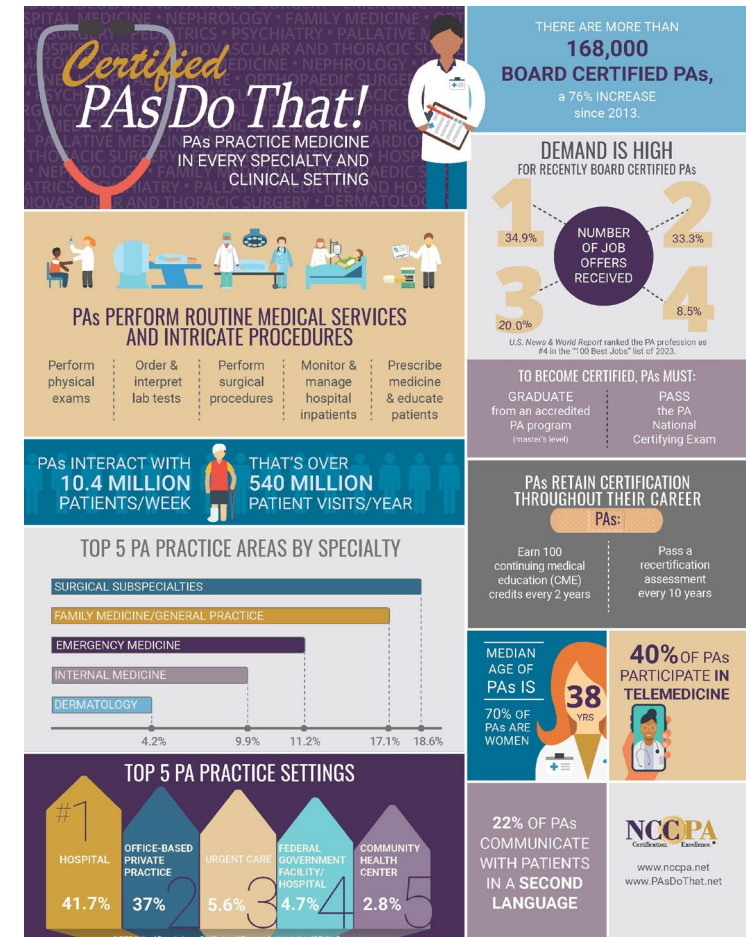


PA Week Annual Giveaway

- Intended for first-year students
- Sign-up invitation email goes out each August
- First Come/First Served
- Supplies Limited
- Shipped to arrive before 10/6
- Make sure NCCPA has valid PD email address as that is the database used for sign-up invite

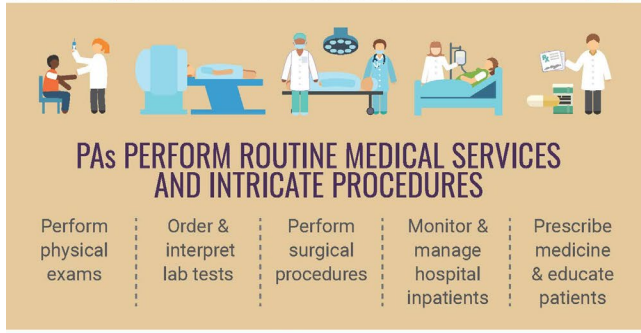


www.PAsDoThat.net – FREE printable infographic



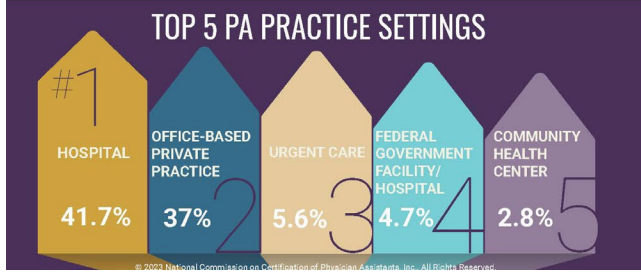
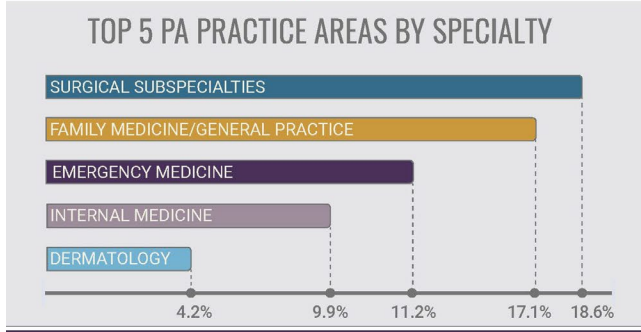
Certified PAs Do That!

PAs PRACTICE MEDICINE IN EVERY SPECIALTY AND CLINICAL SETTING



PAs INTERACT WITH **10.4 MILLION** PATIENTS/WEEK

THAT'S OVER **540 MILLION** PATIENT VISITS/YEAR



THERE ARE MORE THAN **168,000** BOARD CERTIFIED PAs, a 76% INCREASE since 2013.



TO BECOME CERTIFIED, PAs MUST:

GRADUATE from an accredited PA program (master's level)	PASS the PA National Certifying Exam
---	--------------------------------------

PAs RETAIN CERTIFICATION THROUGHOUT THEIR CAREER

PAs:

Earn 100 continuing medical education (CME) credits every 2 years	Pass a recertification assessment every 10 years
---	--

MEDIAN AGE OF PAs IS 38 YRS


70% OF PAs ARE WOMEN

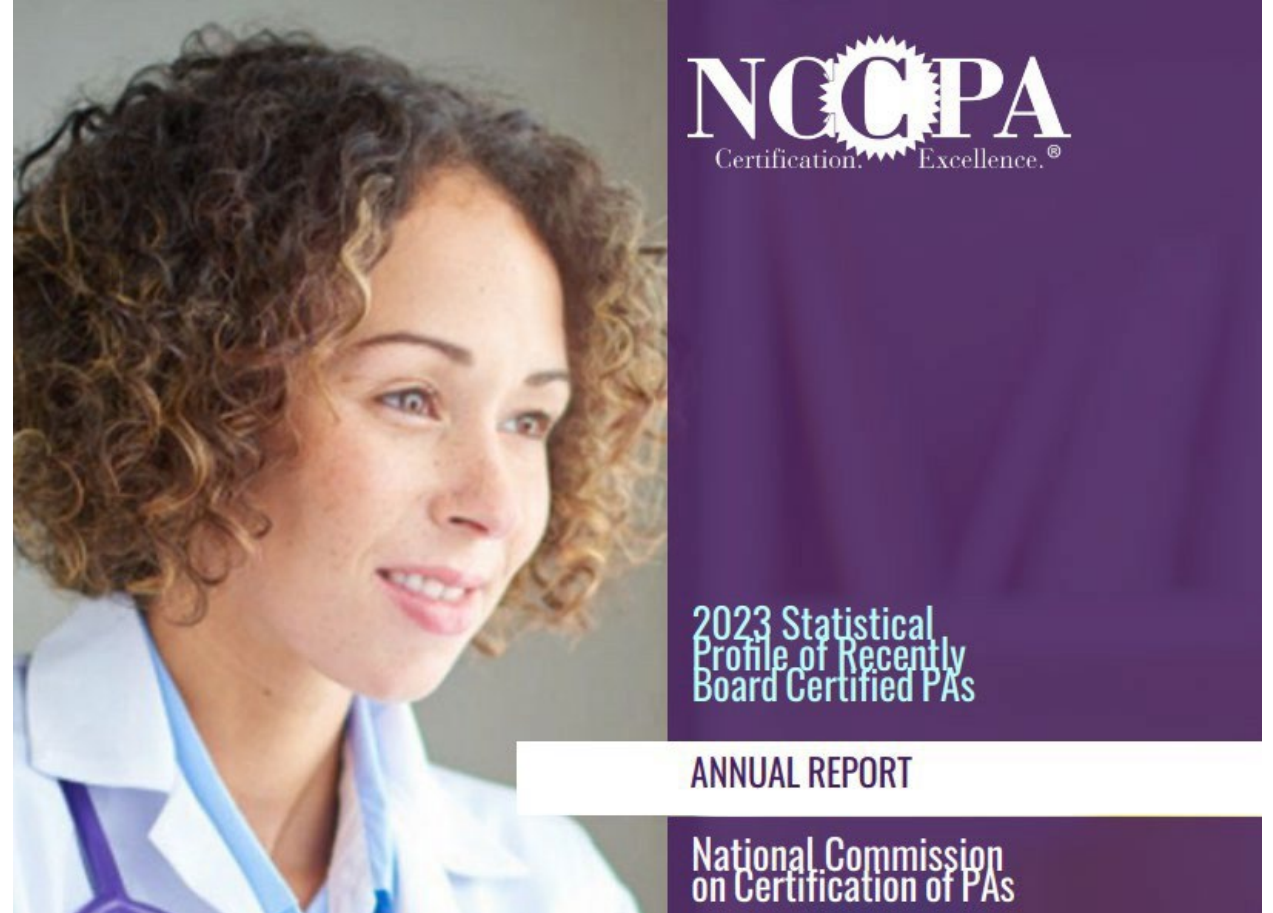
40% OF PAs PARTICIPATE IN TELEMEDICINE

22% OF PAs COMMUNICATE WITH PATIENTS IN A SECOND LANGUAGE

NCCPA
Certification. Excellence.

www.nccpa.net
www.PasDoThat.net

- 
- NCCPA continues to provide the most robust and comprehensive data on the PA profession by publishing 4 research reports each year.
 - Our latest data revealed the number of PAs has increased to over 189,000!
 - PAs have 11.4 million patient interactions every week, which is 595 million patient visits a year



LATEST NCCPA RESEARCH

Specialty report:

<https://www.nccpa.net/wp-content/uploads/2025/08/2024-Statistical-Profile-of-Board-Certified-PAs-by-Specialty.pdf>



NCCPA
Certification Excellence®

**Statistical Profile of
Board Certified PAs
by Specialty**
ANNUAL REPORT

2024



Ariana Golchin's faculty profile

Do you know a PA making a difference?

- Recommend a great alum, PA student or faculty story
- **Submit info to** pr@nccpa.net





THANK YOU FOR YOUR TIME AND ATTENTION!

